

TAVOLA 08B - RILIEVI TOPOGRAFICI - SITUAZIONE IN VARIANTE

TABELLA 12 - COMPUTO SUPERFICIE DEI SINGOLI LOTTI CONNOTI NEL PIANO - COMPARTO D

| figura  | b       | b1 | b2 | h                   | $S = (b+b1) \cdot h / 2$                | $S = (b1+b2) \cdot h / 2$ | [S] Sup. rilevata         | Sup. da Valore (comp. 8B) |
|---|---------|----|----|---------------------|---|---------------------------|---------------------------|---------------------------|
| 17  | 59,35   |    |    | 37,90               | $(59,35 \times 37,90) / 2 =$            |                           | 1124,68 m <sup>2</sup>    | 1190,00 m <sup>2</sup>    |
| 18  | 59,35   |    |    | 28,82               | $(59,35 \times 28,82) / 2 =$            |                           | 855,23 m <sup>2</sup>     | 855,23 m <sup>2</sup>     |
| 33  | 25,30   |    |    | 4,96                | $(25,30 \times 4,96) / 2 =$             |                           | 627,4 m <sup>2</sup>      | 627,4 m <sup>2</sup>      |
| 34  | 25,30   |    |    | 4,61                | $(25,30 \times 4,61) / 2 =$             |                           | 583,2 m <sup>2</sup>      | 583,2 m <sup>2</sup>      |
| 35  | 25,43   |    |    | 4,64                | $(25,43 \times 4,64) / 2 =$             |                           | 590,0 m <sup>2</sup>      | 590,0 m <sup>2</sup>      |
| 36  | 25,43   |    |    | 3,52                | $(25,43 \times 3,52) / 2 =$             |                           | 447,6 m <sup>2</sup>      | 447,6 m <sup>2</sup>      |
| Proprietà Sig. Casa Luca  |         |    |    |                     |   |                           |                           |                           |
| 19  | 4811    |    |    | 31,59               | $(4811 \times 31,59) / 2 =$             |                           | 75900 m <sup>2</sup>      | 75900 m <sup>2</sup>      |
| 20  | 4811    |    |    | 26,02               | $(4811 \times 26,02) / 2 =$             |                           | 62591 m <sup>2</sup>      | 62591 m <sup>2</sup>      |
| 21  | 3076    |    |    | 3,44                | $(3076 \times 3,44) / 2 =$              |                           | 5291 m <sup>2</sup>       | 5291 m <sup>2</sup>       |
| 27  | 4329    |    |    | 3,58                | $(4329 \times 3,58) / 2 =$              |                           | 7829 m <sup>2</sup>       | 7829 m <sup>2</sup>       |
| 28  | 4329    |    |    | 4,30                | $(4329 \times 4,30) / 2 =$              |                           | 9372 m <sup>2</sup>       | 9372 m <sup>2</sup>       |
| Proprietà Sig. Casa Damiano   |         |    |    |                     |   |                           |                           |                           |
| 22  | 3687    |    |    | $(1008 \times 294)$ | $(3687 \times (1008 \times 294)) / 2 =$ |                           | 31128 m <sup>2</sup>      | 31128 m <sup>2</sup>      |
| 22  | (6000m) |    |    | 1823                | $(3687 \times 6000) \times 1823 / 2 =$  |                           | 41665 m <sup>2</sup>      | 82000 m <sup>2</sup>      |
| 24  | 404     |    |    | 1003                | $(404 \times 1003) \times 1003 / 2 =$   |                           | 6459 m <sup>2</sup>       | 6459 m <sup>2</sup>       |
| 27  | 891     |    |    | 360                 | $(891 \times 360) / 2 =$                |                           | 1604 m <sup>2</sup>       | 1604 m <sup>2</sup>       |
| 29  | 2039    |    |    | 423                 | $(2039 \times 423) / 2 =$               |                           | 4312 m <sup>2</sup>       | 4312 m <sup>2</sup>       |
| 40  | 2039    |    |    | 478                 | $(2039 \times 478) / 2 =$               |                           | 4873 m <sup>2</sup>       | 4873 m <sup>2</sup>       |
| Proprietà Sig. Ledi Salvatore   |         |    |    |                     |   |                           |                           |                           |
| 26  | 936     |    |    | 394                 | $(936 \times 394) / 2 =$                |                           | 1869 m <sup>2</sup>       | 1869 m <sup>2</sup>       |
| 27  | 936     |    |    | 383                 | $(936 \times 383) / 2 =$                |                           | 1907 m <sup>2</sup>       | 1907 m <sup>2</sup>       |
| 28  | 2908    |    |    | 395                 | $(2908 \times 395) / 2 =$               |                           | 5743 m <sup>2</sup>       | 5743 m <sup>2</sup>       |
| 29  | 3420    |    |    | 2081                | $(3420 \times 2081) / 2 =$              |                           | 35689 m <sup>2</sup>      | 35689 m <sup>2</sup>      |
| 30  | 3420    |    |    | 212                 | $(3420 \times 212) / 2 =$               |                           | 3636 m <sup>2</sup>       | 3636 m <sup>2</sup>       |
| 31  | 3834    |    |    | 666                 | $(3834 \times 666) / 2 =$               |                           | 12767 m <sup>2</sup>      | 12767 m <sup>2</sup>      |
| 32  | 3834    |    |    | 1894                | $(3834 \times 1894) / 2 =$              |                           | 36300 m <sup>2</sup>      | 36300 m <sup>2</sup>      |
| Proprietà Sig. Mole Giovanni Francesco  |         |    |    |                     |   |                           |                           |                           |
| 40  | 2039    |    |    |                     |   |                           | [S] 114147 m <sup>2</sup> | 114140 m <sup>2</sup>     |
| SUPERFICIE RILEVATA INTERO COMPARTO "D" [S] 587678 m <sup>2</sup> [S] 587600 m <sup>2</sup> |         |    |    |                     |   |                           |                           |                           |

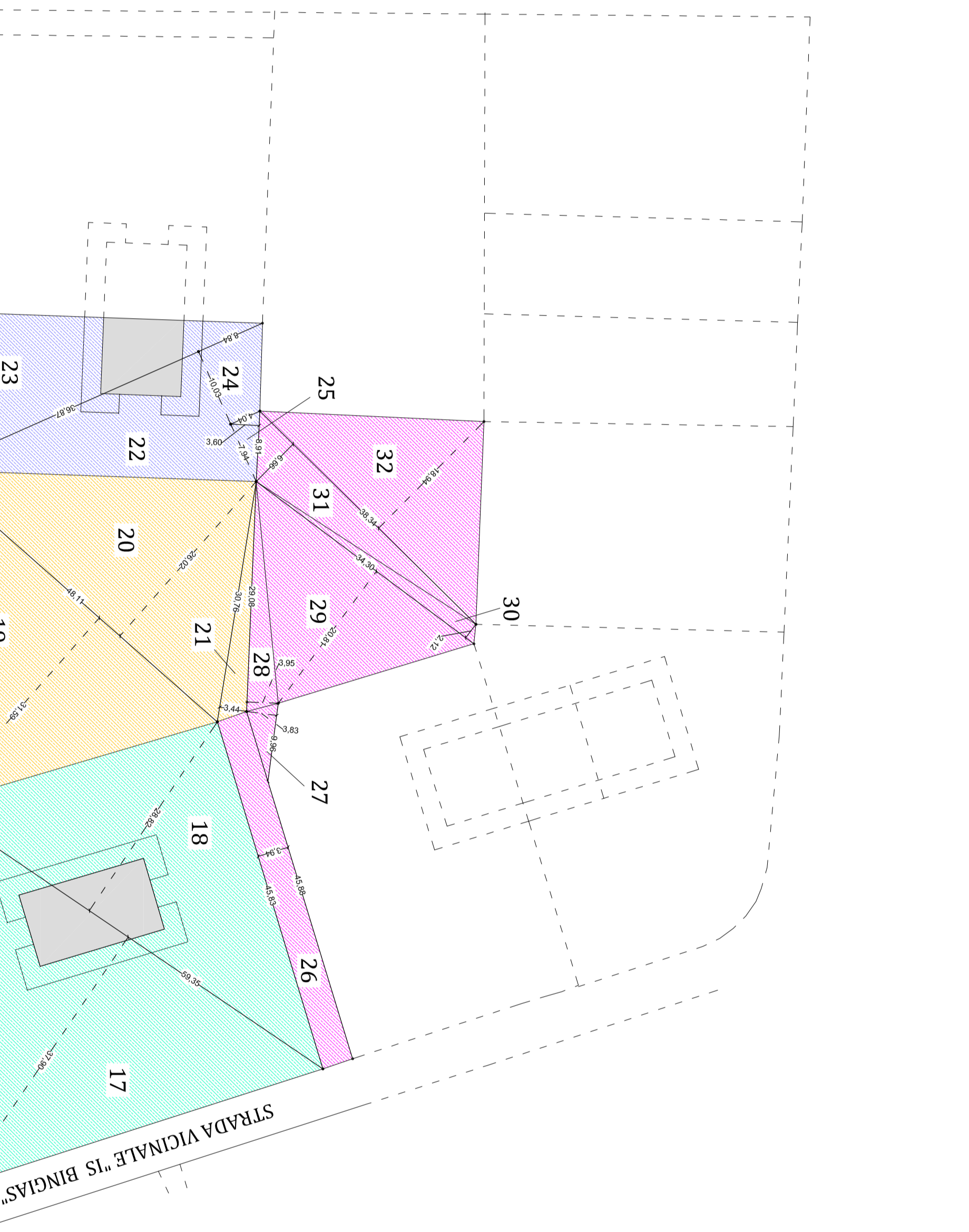
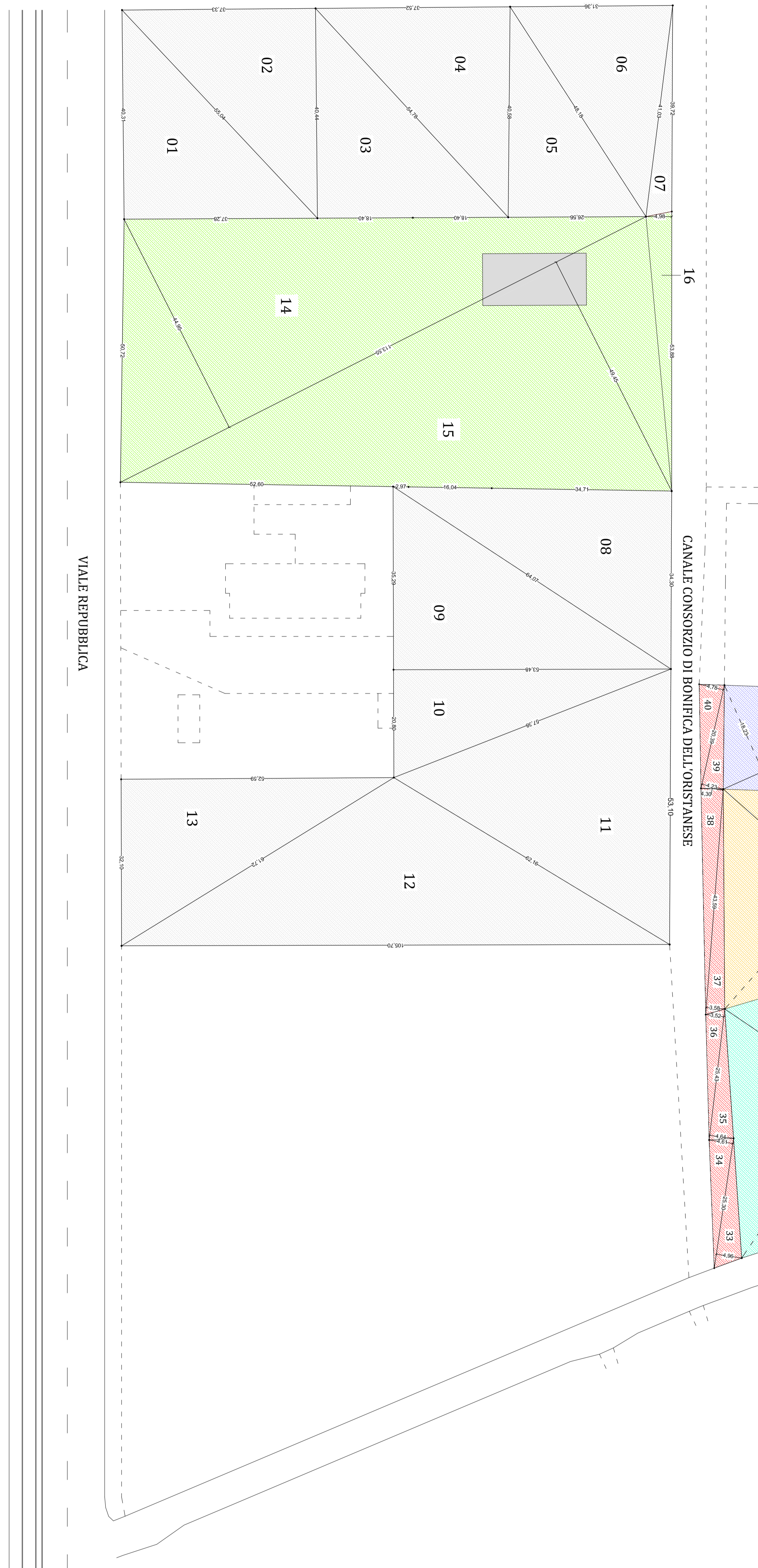


TABELLA 11 - COMPUTO SUPERFICIE DEI SINGOLI LOTTI CONNOTI NEL PIANO - COMPARTI A - B - C

| figura   | a      | b      | c     | $p = (a+b+c) / 2$ | $S = \sqrt{p(p-a)(p-b)(p-c)}$  | [S] Sup. rilevata          | Sup. standard          |                        |
|--|--------|--------|-------|-------------------|--|----------------------------|------------------------|------------------------|
| 01   | 40,31  | 37,28  | 55,04 | 66,32             | $\sqrt{66,32 \times (66,32-40,31) \times (66,32-37,28) \times (66,32-55,04)} =$      | 751,70 m <sup>2</sup>      | 751,70 m <sup>2</sup>  |                        |
| 02   | 55,04  | 37,23  | 40,44 | 66,41             | $\sqrt{66,41 \times (66,41-55,04) \times (66,41-37,23) \times (66,41-40,44)} =$      | 755,14 m <sup>2</sup>      | 755,14 m <sup>2</sup>  |                        |
| Proprietà Sig. Ficus Giorgio   |        |        |       |                   |  |                            |                        |                        |
| 03   | 40,44  | 36,80  | 54,78 | 66,01             | $\sqrt{66,01 \times (66,01-40,44) \times (66,01-36,80) \times (66,01-54,78)} =$      | 744,99 m <sup>2</sup>      | 1504,00 m <sup>2</sup> |                        |
| 04   | 54,78  | 37,52  | 40,58 | 66,44             | $\sqrt{66,44 \times (66,44-54,78) \times (66,44-37,52) \times (66,44-40,58)} =$      | 761,16 m <sup>2</sup>      | 1504,00 m <sup>2</sup> |                        |
| Proprietà Sig. Desi Antonio  |        |        |       |                   |  |                            |                        |                        |
| 05   | 40,58  | 36,56  | 48,18 | 57,66             | $\sqrt{57,66 \times (57,66-40,58) \times (57,66-36,56) \times (57,66-48,18)} =$      | 530,55 m <sup>2</sup>      | 530,55 m <sup>2</sup>  |                        |
| 06   | 48,18  | 31,56  | 41,03 | 60,29             | $\sqrt{60,29 \times (60,29-48,18) \times (60,29-31,56) \times (60,29-41,03)} =$      | 637,82 m <sup>2</sup>      | 637,82 m <sup>2</sup>  |                        |
| 07   | 41,03  | 3972   | 5,08  | 4292              | $\sqrt{4292 \times (4292-41,03) \times (4292-3972) \times (4292-5,08)} =$            | 9911 m <sup>2</sup>        | 1271,00 m <sup>2</sup> |                        |
| Proprietà Sig. Arangino Ivan   |        |        |       |                   |  |                            |                        |                        |
| 07   | 4103   | 3972   | 508   | 4292              |  | [S] 1275,70 m <sup>2</sup> | 1271,00 m <sup>2</sup> |                        |
| SUPERFICIE RILEVATA COMPARTO "A" [S] 428787 m <sup>2</sup> [S] 427900 m <sup>2</sup>   |        |        |       |                   |  |                            |                        |                        |
| figura   | a      | b      | c     | $p = (a+b+c) / 2$ | $S = \sqrt{p(p-a)(p-b)(p-c)}$  | [S] Sup. rilevata          | Sup. standard          |                        |
| 08   | 34,50  | 53,72  | 64,07 | 76,05             | $\sqrt{76,05 \times (76,05-34,50) \times (76,05-53,72) \times (76,05-64,07)} =$      | 921,82 m <sup>2</sup>      | 921,82 m <sup>2</sup>  |                        |
| 09   | 64,07  | 35,29  | 53,48 | 76,42             | $\sqrt{76,42 \times (76,42-64,07) \times (76,42-35,29) \times (76,42-53,48)} =$      | 943,65 m <sup>2</sup>      | 1065,00 m <sup>2</sup> |                        |
| Proprietà Sig. Mole Cristina   |        |        |       |                   |  |                            |                        |                        |
| 10   | 20,80  | 33,48  | 37,28 | 65,43             | $\sqrt{65,43 \times (65,43-20,80) \times (65,43-33,48) \times (65,43-37,28)} =$      | 536,29 m <sup>2</sup>      | 536,29 m <sup>2</sup>  |                        |
| 11   | 57,28  | 33,50  | 62,16 | 66,32             | $\sqrt{66,32 \times (66,32-57,28) \times (66,32-33,50) \times (66,32-62,16)} =$      | 545,97 m <sup>2</sup>      | 545,97 m <sup>2</sup>  |                        |
| 12   | 62,16  | 105,70 | 61,72 | 114,79            | $\sqrt{114,79 \times (114,79-62,16) \times (114,79-105,70) \times (114,79-61,72)} =$ | 1707,16 m <sup>2</sup>     | 1707,16 m <sup>2</sup> |                        |
| 13   | 61,72  | 32,10  | 52,59 | 73,21             | $\sqrt{73,21 \times (73,21-61,72) \times (73,21-32,10) \times (73,21-52,59)} =$      | 844,43 m <sup>2</sup>      | 844,43 m <sup>2</sup>  |                        |
| Proprietà Sig. Mole Sandro   |        |        |       |                   |  |                            |                        |                        |
| 13   | 6172   | 3210   | 5259  | 7321              |  | [S] 4523,75 m <sup>2</sup> | 4522,00 m <sup>2</sup> |                        |
| SUPERFICIE RILEVATA INTERO PIANO COMPARTO "B" [S] 438902 m <sup>2</sup> [S] 438902 m <sup>2</sup>  |        |        |       |                   |  |                            |                        |                        |
| figura   | b      | b1     | b2    | h                 | $S = (b+b1) \cdot h / 2$   | $S = (b1+b2) \cdot h / 2$  | Sup. rilevata          | Sup. standard          |
| 14   | 113,57 |        |       | 44,95             | $(113,57 \times 44,95) / 2 =$  |                            | 2524,4 m <sup>2</sup>  | 2524,4 m <sup>2</sup>  |
| 15   | 113,57 |        |       | 49,45             | $(113,57 \times 49,45) / 2 =$  |                            | 2807,22 m <sup>2</sup> | 2807,22 m <sup>2</sup> |
| 16   | 53,88  |        |       | 4,98              | $(53,88 \times 4,98) / 2 =$  |                            | 1341,6 m <sup>2</sup>  | 1341,6 m <sup>2</sup>  |
| Proprietà Sig. Del Rio Demetrio  |        |        |       |                   |  |                            |                        |                        |
| SUPERFICIE RILEVATA COMPARTO "C" [S] 449477 m <sup>2</sup> [S] 449477 m <sup>2</sup>   |        |        |       |                   |  |                            |                        |                        |
| SUPERFICIE RILEVATA INTERO PIANO COMPARTO "X" + COMPARTO "B" + COMPARTO "C" + COMPARTO "D" [S] 2204729 m <sup>2</sup> [S] 2204729 m <sup>2</sup> |        |        |       |                   |  |                            |                        |                        |



**COMUNE DI ORISTANO**  
Provincia di Oristano

**ESTENSIONE PIANO DI LOTTIZZAZIONE CONVENZIONATA DISCIPLINATO BORGIO VERDE, AREA ORISTANO NORD-OVEST - VIALE REPUBBLICA - ORISTANO**

**RILIEVI TOPOGRAFICI STRADALI**

**Tavola 8B**

Scala di Riferimento: 1:500  
Data: 06/03/2023

Autore: S. Rinaldi 2023